

THOMAS SUNDAY

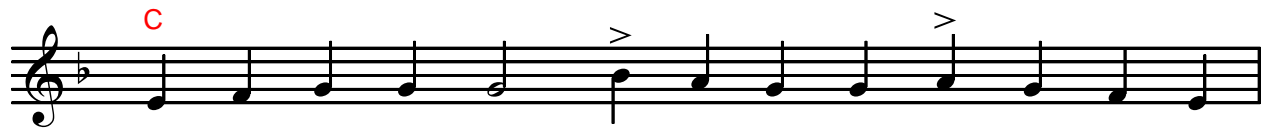
Apolytikion

Grave Mode

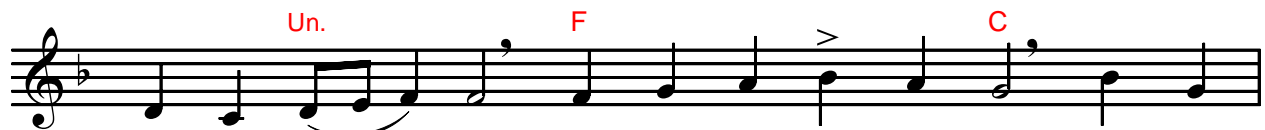
Intonation: #21

Allegro ♩=150

Ἐσφραγισμένου τοῦ μνήματος



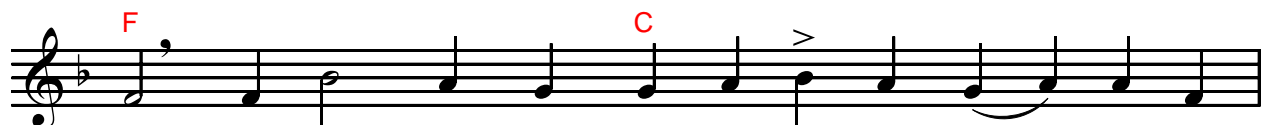
Whilst the tomb was sealed, Thou, O Life, didst shine forth from the



grave, O Christ— God; and whilst the doors were shut, Thou didst



come un - to— Thy dis - ci - ples, O Res - ur - rec - tion of



all, re - new - ing through them an up - right Spir - it in

Intermediate Ending

D C Un.

us ac - cord - ing to Thy great mer - cy.

Final Ending

C

ac - cord - ing to Thy great mer - cy.

Un.





THOMAS SUNDAY

Kontakion

Plagal Fourth Mode

Intonation: #25

Allegro ♩=150

Τῆ φιλοπράγματι δεξιᾶ



With his search-ing right__ hand, Thom-as did probe Thy life - be -



stow - ing side, O__ Christ God; for when Thou didst



en - ter whilst the doors were shut, he cried_ out un - to Thee

Intermediate Ending



with the rest of the A - pos - tles: Thou art my__

Un. F

Lord_ and_ my_ God.

This block contains the first line of musical notation. It is written on a single staff in a treble clef with a key signature of one flat (B-flat). The melody consists of a series of quarter notes: G4, A4, Bb4, C5, Bb4, A4, G4. The notes are grouped with slurs. Above the staff, the dynamic marking 'Un.' is written in red above the first note, and 'F' is written in red above the second note. Below the staff, the lyrics 'Lord_ and_ my_ God.' are aligned with the notes.

Final Ending

C Un.

Thou art my Lord_ and my God._____

This block contains the final ending of the musical piece. It is written on a single staff in a treble clef with a key signature of one flat. The melody consists of a series of quarter notes: G4, A4, Bb4, C5, Bb4, A4, G4. The notes are grouped with slurs. Above the staff, the dynamic marking 'C' is written in red above the first note, and 'Un.' is written in red above the last note. Below the staff, the lyrics 'Thou art my Lord_ and my God._____' are aligned with the notes.

