

# SLOW ANAPHORA

## (BRIEF VERSION)

Petitions are intoned  
at A and/or D

Duration: 2:15 + :10 + :25 + 1:45

### For the Liturgy of St. Basil

**Andante** ♩=90

Plagal First Mode

by Hieromonk Gregory  
of Simonos Petras Monastery

**G** Duration: 2:15



Ho - ly, **X** ho - - - ly, ho - - -  
 A - γι - ος α - - - γι - - - ος α - - -  
 Ah - yee - os ah - - - yee - - - os ah - - -



ly, Lord of  
 γι - - - (vi) - - - ος Κυ - - - ρι - ος  
 yee - - - (nee) - - - os Kee - - - ree - os



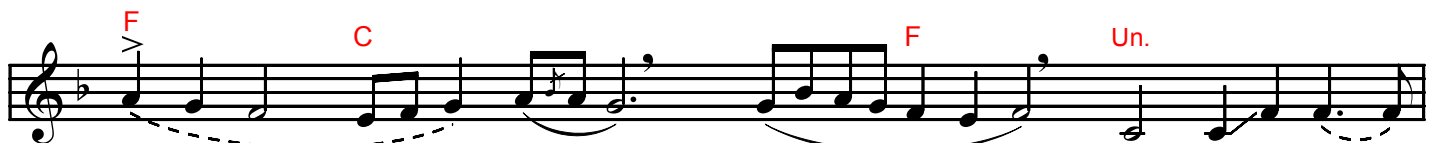
Sa - ba - oth,  
 Σα - βα - ωθ  
 Sah - vah - oth



heav - - - en and earth  
 πη - - - ρης ο - ου - ρα -  
 plee - - - rees ο - oo - rah -

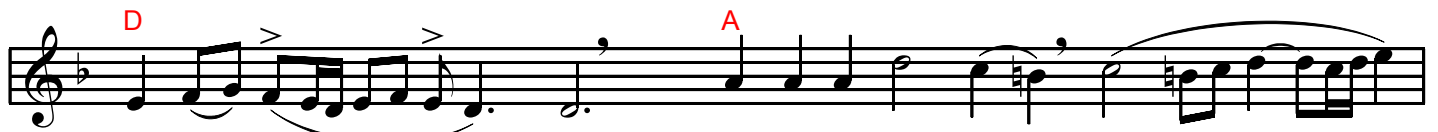


are full of Your **X**  
 vos και η γη της δο - η  
 nos keh ee yee tees dho - ee



glo - - - ry. Ho - san - na  
 γη της δο - ξης σου - - - (vου) ω - σαν - να εν  
 yee tees dho - ksees soo - - - (noo) ο - sah - nah en

Liturgy of St. Basil - Slow Anaphora - Plagal First Mode (Brief Version)



in the\_ high - - - est. Bless-ed is he\_\_\_\_\_ that\_\_\_\_\_

τοις υ - ψι - - - στοις ευ - λο - γη - με - νος\_ ο ερ - - -

dees ee - psee\_\_\_\_\_ stees ev - lo - yee - meh - nos\_ ο er - - -



comes\_\_\_\_\_ X in the name\_\_\_\_\_ of\_ the\_\_\_\_\_ of the

χο - - - - με - νος εν ο - νο - μα - τι Κυ - ρι - - - Κυ -

ho - - - - meh - nos en o - no - mah - tee Kee - ree - - - Kee -



Lord.\_\_\_\_\_ Hos - san - na\_\_\_\_\_ X

ρι - - - - ου ω - σαν - να\_\_\_\_\_ εν

ree - - - - oo o - sah - nah\_\_\_\_\_ en



in the high - - - - - est.

τοις υ - ψι - - - - - στοις

dees ee - psee - - - - - stees

**H** Duration: 0:10



A - men. \_\_\_\_\_

A - μην. \_\_\_\_\_

Ah - meen. \_\_\_\_\_

**I** Duration: 0:25



A - me - - - - -

A - μη - - - - -

Ah - mee - - - - -



- - - - - A - - - - - men. \_\_\_\_\_

- - - - - α - - - - - μην. \_\_\_\_\_

- - - - - ah - - - - - meen. \_\_\_\_\_

*Liturgy of St. Basil - Slow Anaphora - Plagal First Mode (Brief Version)*

**Adagio** ♩=70

**J** Duration: 1:45

**D**

We \_\_\_\_\_ hymn \_\_\_\_\_ You, \_\_\_\_\_ we \_\_\_\_\_ bless \_\_\_\_\_ You,  
 Σε υ - μνου - - - - - μεν Σε ευ - λο - γου - - - - - μεν  
 Seh ee - mnoo - - - - - men Seh ev - lo - goo - - - - - men

**Andante** ♩=100

**A** **G** **A**

we \_\_\_\_\_ give \_\_\_\_\_ thanks \_\_\_\_\_  
 Σου ευ - χα - ρι - στου - - - - - μεν  
 See ef - hah - ree - stoo - - - - - men

un - - - - - to \_\_\_\_\_ You, \_\_\_\_\_ O \_\_\_\_\_  
 Κυ - - - - - ρι - - - - - ε \_\_\_\_\_  
 Kee - - - - - ree - - - - - eh \_\_\_\_\_

**G** **D**

Lord, \_\_\_\_\_ and \_\_\_\_\_ we \_\_\_\_\_  
 Κυ - - - - - ρι - - - - - ε \_\_\_\_\_ και - - - - - (ναι) - - - - - και  
 Kee - - - - - ree - - - - - eh \_\_\_\_\_ keh - - - - - (neh) - - - - - keh

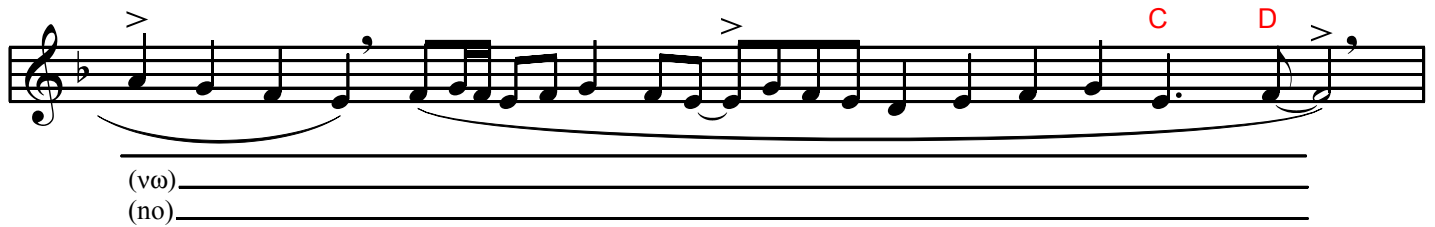
**A** **D**

and we \_\_\_\_\_ pray \_\_\_\_\_ un - we pray un - to You,  
 δε ο - με - θα \_\_\_\_\_ σου δε ο - με - θα \_\_\_\_\_ σου  
 dheh - o - meh - thah \_\_\_\_\_ soo dheh - o - meh - thah \_\_\_\_\_ soo

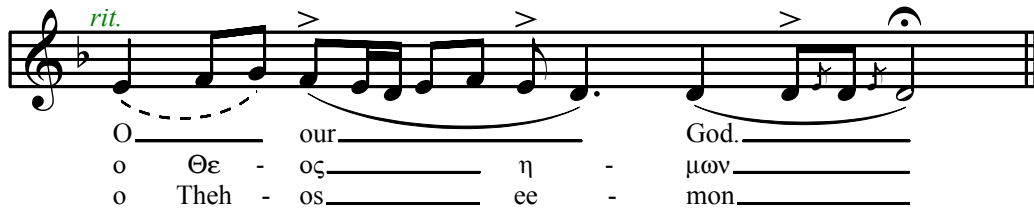
O \_\_\_\_\_ our \_\_\_\_\_  
 ο \_\_\_\_\_ Θε - - - - - ος η - - - - -  
 o \_\_\_\_\_ Theh - - - - - os ee - - - - -

God \_\_\_\_\_  
 μω - - - - -  
 mo - - - - -

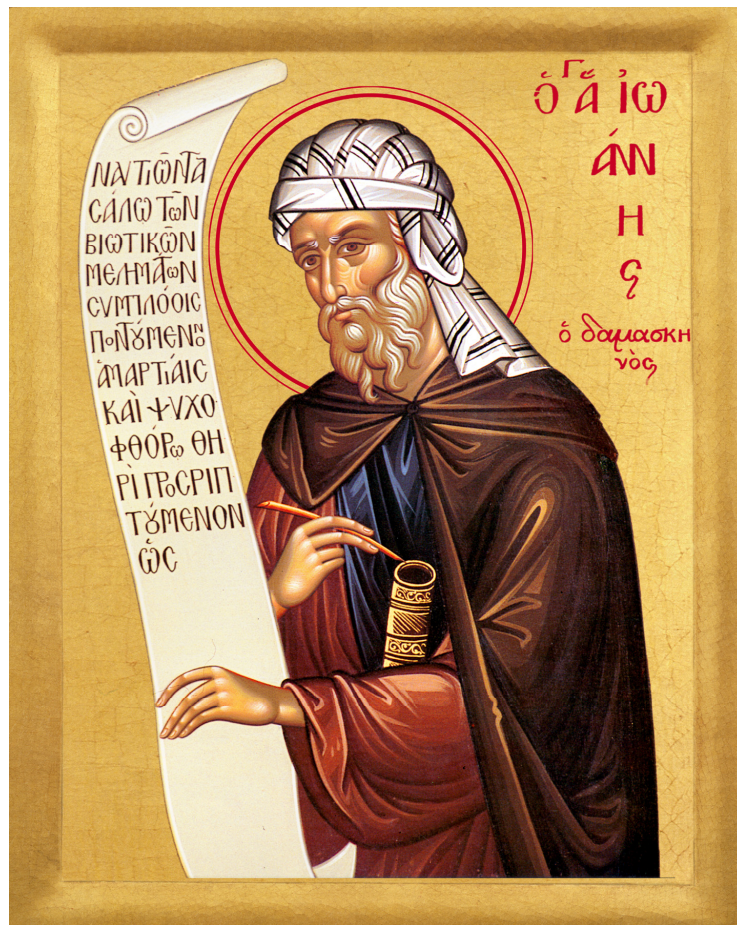
*Liturgy of St. Basil - Slow Anaphora - Plagal First Mode (Brief Version)*



(vo) \_\_\_\_\_  
 (no) \_\_\_\_\_



O our God.  
 ο Θε - ος η - μων  
 o Theh - os ee - mon



ST. JOHN DAMASCENE