

# CHERUBIC HYMN

Duration: 3:30 + :20 + 1:00

## Fourth Mode "Legetos"

Intonation: #9

by Hieromonk Gregory  
of Simonos Petras Monastery

Adagio  $\text{♩} = 72$

Let us who  
Οι τα χε - - - - - ρου - - -  
ee tah heh - - - - - roo - - -

us who mys - ti - c'ly rep - re -  
ρου - βιμ - - - - - μν - στι - κως ει - κο -  
roo - veem - - - - - mee - stee - kos ee - ko -

sent the  
νι - - - - - ζον - τες και  
nee - - - - - zo - ndes keh

Che - - - the Che - - -  
τη - - - ζω - ο - - -  
tee - - - zo - ο - - -

ru - - - the Che - ru - bim -  
ποι - - - ζω - ο - ποι - ω  
pee - - - zo - ο - pee - ο

*Cherubic Hymn - Fourth Mode (Legetos) - Gregory*



and chant

Τρι - α

Tree - ah

(va)

(nah)



(va)

(nah)



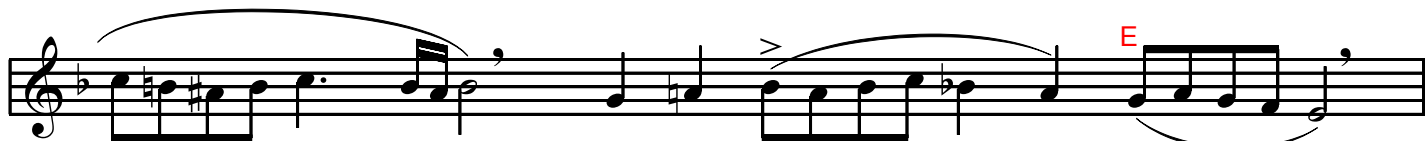
and chant

(ve)

(ne)

Τρι - α

Tree - ah



the thrice - ho

τον τρι - σα

ton tree - sah

ly

γι - ον

yee - on

δι

dhee



hymn

υ - μνον

ee - mnon

to

προ - σα

pro - sah

the

προ - σα

pro - sah

life

δον

dho

giv

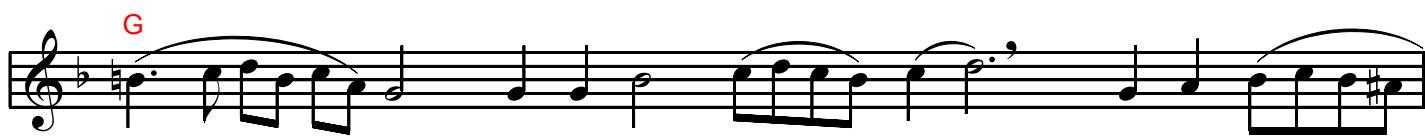
δον

dho

ing

τες

ndes



Trin

πα - σαν

pah - san

i

την βι - ω - τι

teen vee - o - tee

ty

κειν

keen

now

κειν

keen

lay

κειν

keen

a

κειν

keen

side

κειν

keen

ev

α - πο - θω

ah - po - tho

'ry

α - πο - θω

ah - po - tho

earth

α - πο - θω

ah - po - tho



ly

με - θα

meh - thah

care

με - ρι

meh - ree

ev

με - ρι

meh - ree

'ry

με - ρι

meh - ree

earth

με - ρι

meh - ree

ly

με - ρι

meh - ree

care,

με - ρι

meh - ree

Un.

με - ρι

meh - ree

care,

με - ρι

meh - ree

Un.

με - ρι

meh - ree

care,

με - ρι

meh - ree

Un.

με - ρι

meh - ree

*Cherubic Hymn - Fourth Mode (Legetos) - Gregory*

that we may receive the King of all  
 ως τον Βασιλέα των όλων υποδεξόμενοι  
 os ton va-see-leh-ah ton o-lon ee-po-dhek-so-men-ee

*For brevity, the words in parentheses may be chanted in a monotone, or as follows if time allows:*

X X X X X X X X X that we may re-ceive the King  
 ως τον βα - σι - λε - - - α των ο - - - λων υ - πο - δε - ξο -  
 os ton vah - see - leh - - - ah ton o - - - lon ee - po - dhék - so -

of all  
 με νοι  
 meh nee

*After the Great Entrance:*

in - vis - - i - in - vis - i - bly  
 ταις αγ - γε - - λι αγ - γε - λι καις  
 tes ah - nge - - lee ah - nge - lee kes

X X es - cor - - - X X X X - ted  
 α - ο - ρα - - - τως  
 ah - o - rah - - - tos

by the an - ge - - lic or - - - ders.  
 δο - ρυ - φο - ρου - - - με - νον τα - - - ξε - σιν  
 dho-ree - fo - roo - - - meh - non tah - kseh - seen

*Cherubic Hymn - Fourth Mode (Legetos) - Gregory*

Al - le - lu - i - a.  
 Αλ - λη - λου - ι - α.  
 Ah - lee - loo - ee - ah

*(continue with anaphora on page 331 or 335)*

