



# I SHALL GO INTO THY HOUSE

adapted from Hieromonk Gregory  
of Simonos Petras Monastery\*

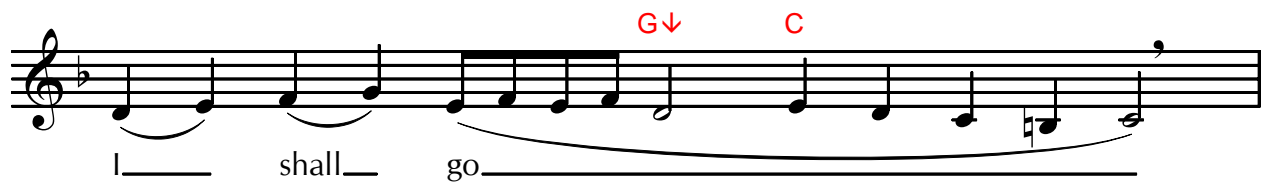
Duration: 2:30

Intonation: #26

Plagal Fourth Mode

**Largo** ♩=60

Εἰσελεύσομαι εἰς τὸν οἶκόν σου



\* In some places on the Holy Mountain, this psalm verse is chanted at the beginning of a vigil while the priest censures. In other places on the Holy Mountain, however, nothing is chanted or read at that time in a vigil, which is the more traditional practice.

*I Shall Go into Thy House*

in - - - - - to

Thy house;

I shall wor - - - - -

- - - - - ship toward

toward

Thy ho - ly tem - - - -

- - - - - ple

in fear of Thee, O

**Hard Chromatic**

Chord markings: D, C, G↓, C, D, C, D, F, G, F, G, A, Un., C

Musical score for the hymn "I Shall Go into Thy House". The score is written on two staves in a single system. The first staff begins with a treble clef and a key signature of one flat (B-flat). The melody starts with a half note G4, followed by quarter notes A4, Bb4, and C5. A red "D" is placed above the C5 note. The melody continues with quarter notes Bb4, A4, G4, and F4. A red "C" is placed above the F4 note. The second staff continues the melody with quarter notes E4, D4, C4, and B3. The lyrics "O Lord, O Lord." are written below the notes. The second staff includes performance markings: a fermata over the first note, a fermata over the last note, and a "Un. rit." marking with accents over the notes G4, A4, and Bb4.



THE PROPHET MOSES