



# ΕΥΛΟΓΕΤΑΡΙΑ OF THE RESURRECTION

Long Version  
for the Orthros of Holy Saturday

Duration: 7:30

Intonation: #14 or #15

Plagal First Mode

adapted from Petros Peloponnesios (d. 1777)

**Allegro** ♩=130

Εὐλογητὸς εἶ Κύριε

1

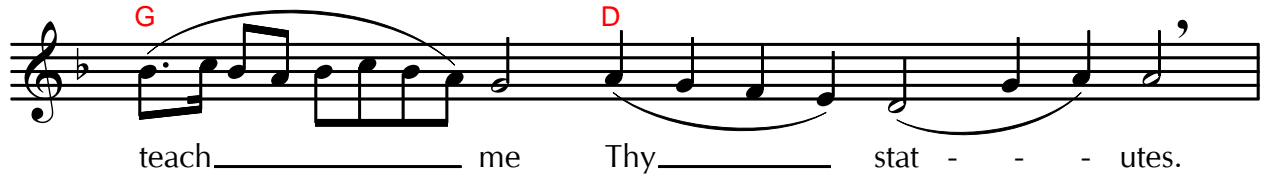
Bless - ed art Thou, O Lord,

teach me Thy statutes.

The assembly of an

*Evlogitaria - Long Version*

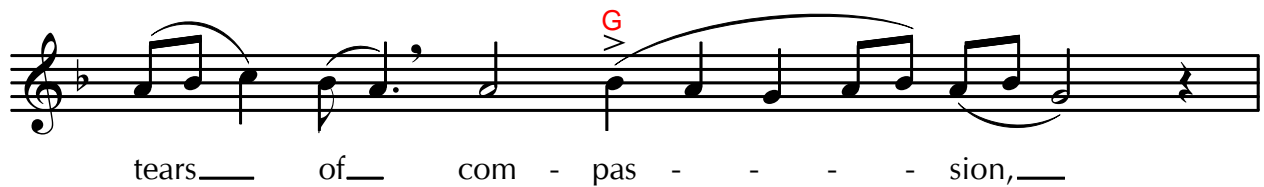
gels was a - mazed\_ to\_ see\_ Thee\_ ac -  
 count - - - ed\_ a - mong\_ the\_ dead,\_  
 Thou\_ Who\_ hadst\_ de - stroyed\_  
 the\_ might\_ of\_ death, O\_ Sav - - -  
 iour,\_ and didst raise\_ up\_ Ad - am  
 with\_ Thy - self,\_ and Who hadst  
 freed\_ all\_ men from\_ Ha - - - des.  
 2 Bless - ed art Thou,\_ O\_ Lord,\_



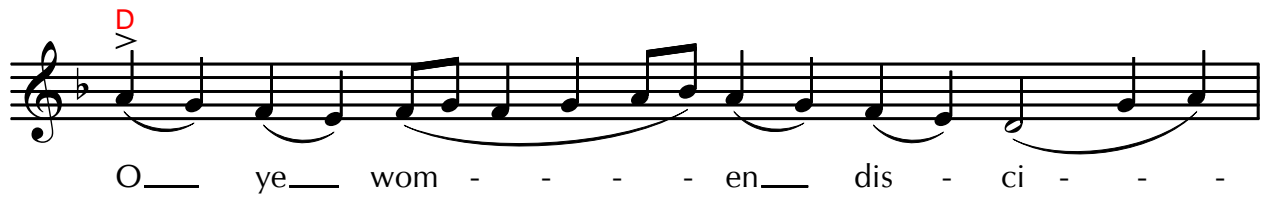
teach me Thy statutes.



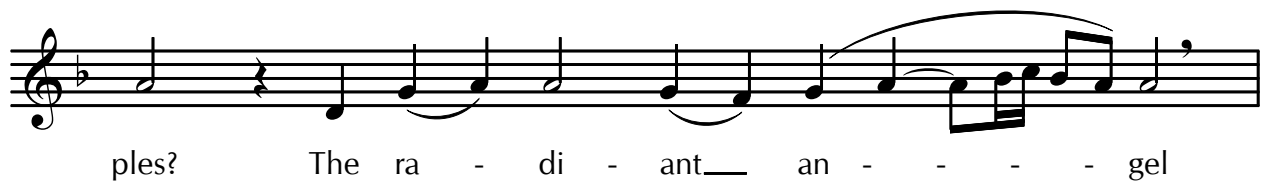
Why do ye mingle myrrh with



tears of compassion,



O ye women disci-



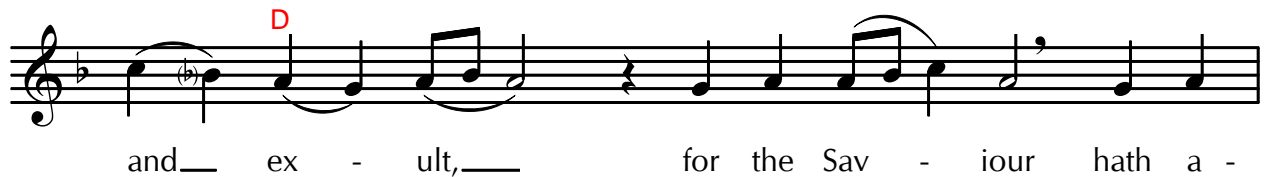
ples? The radiant angel



in the grave addressed the myrrh



bearing women: Be-hold the grave



and exult, for the Saviour hath a

*Evlogitaria - Long Version*

ris - - - en from the sep - ul - chre.

3

Bless - ed art Thou, O Lord,

teach me Thy stat - - - utes.

At ear - ly morn, the myrrh - bear -

ers has - - - - tened to Thy sep -


ul - chre with lam - en - ta - - - -

tion; but an an - - - - gel came to

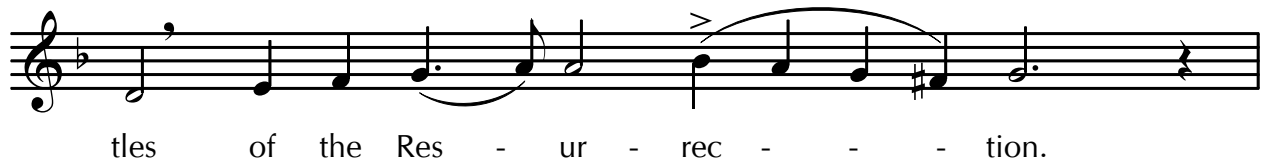
them and said: The time for sor - - - -



row is end - ed; weep ye



no long - - - er. And tell the a - pos -

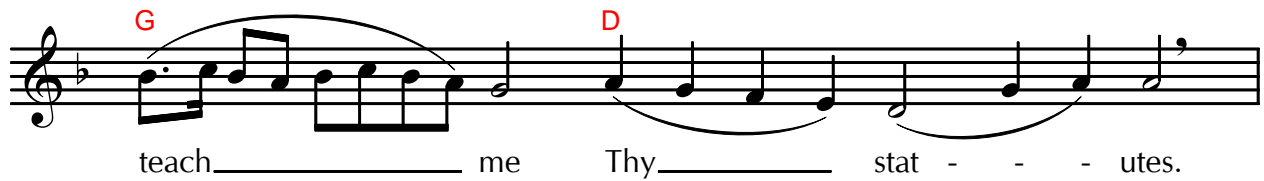


tles of the Res - ur - rec - - - tion.

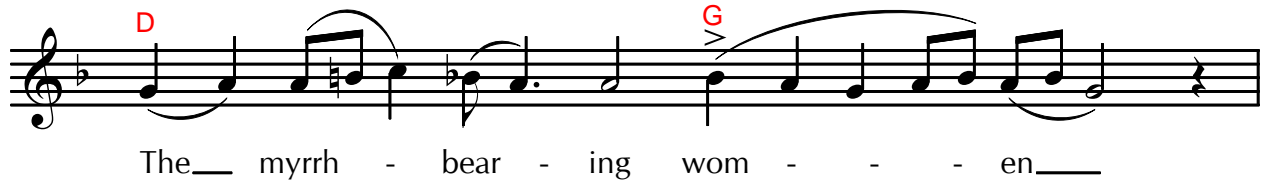
4



Bless - ed art Thou, O Lord,



teach me Thy stat - - - utes.



The myrrh - bear - ing wom - - - en



came with myrrh un - to Thy tomb, O



Sav - - - iour, and they heard an

*Evlogitaria - Long Version*

an - gel say - ing un - to them:

Why do ye count the Liv - - -

ing a - mong the dead?

For, as God, He is ris - en from

the sep - ul - chre.

Glo - ry to the Fa - ther, and to the

Son, and to the Ho - ly

Spir - - - it.



We wor - ship the\_\_\_ Fa - - - ther, and\_\_\_



His\_\_\_ Son,\_\_\_ and the Ho - ly\_\_\_ Spir - - -



it, the\_\_\_ Ho - ly\_\_\_ Trin - i - ty,\_\_\_



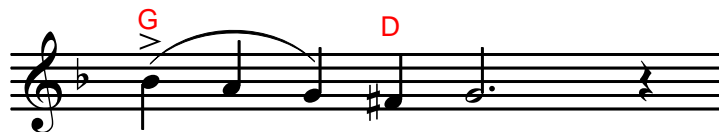
one in\_\_\_ es - sence; and we cry\_\_\_ out\_\_\_



with the\_ Ser - - - a - phim:\_\_\_ Ho - ly,\_\_\_



Ho - - - ly, Ho - - - ly art\_\_\_

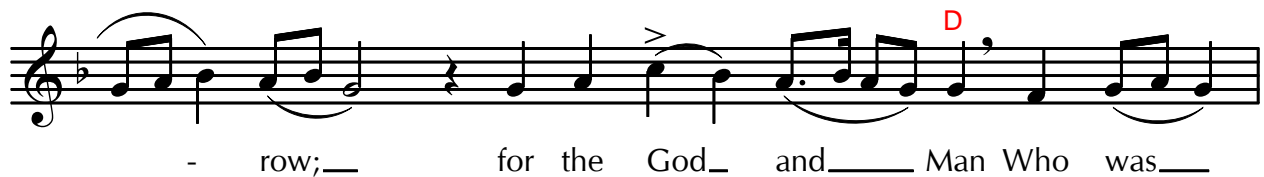
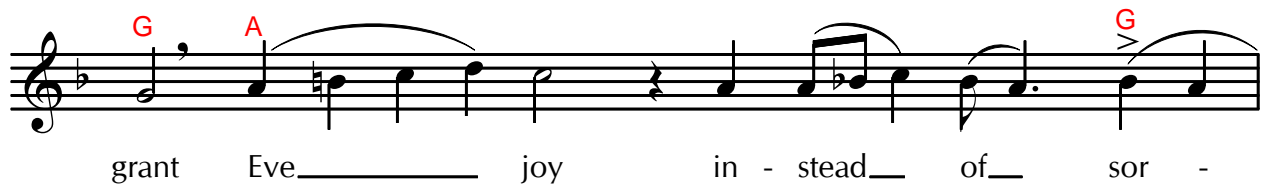
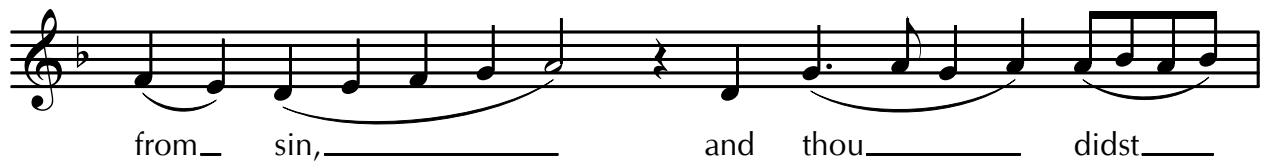
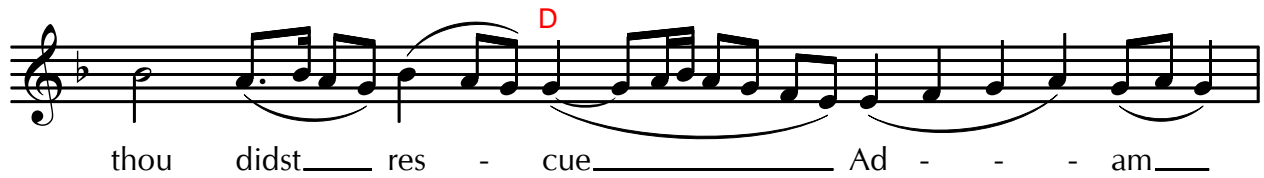
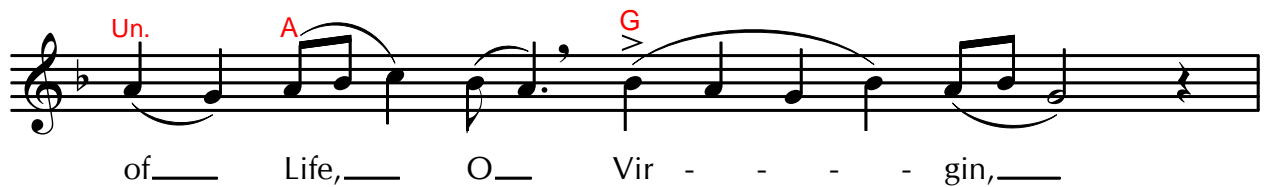
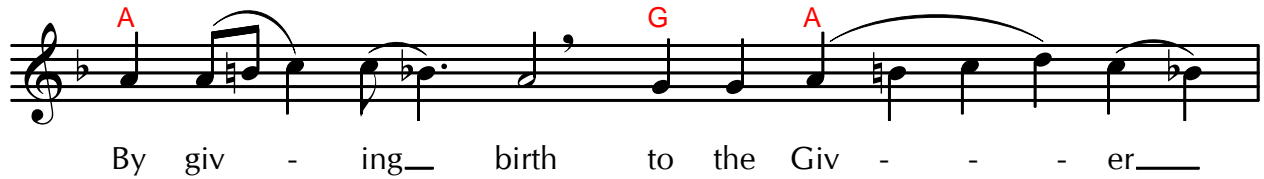
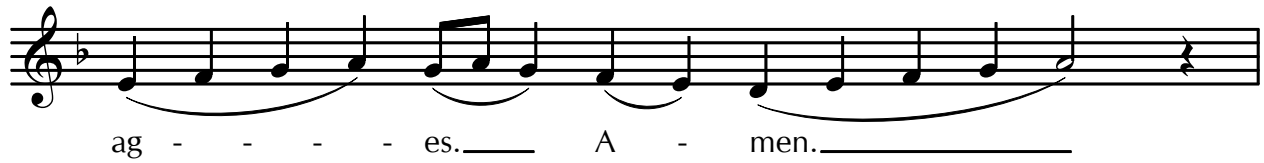


Thou,\_\_\_ O Lord.



Both now and ev - er, and un - to the ag - es of

6

*Evlogitaria - Long Version*



guid - ed back to life him that had fall -

en a way there from.

7 and 8

Al - le - lu - i - a, Al -

le - lu - i - a, Al - le - lu - i -

a. Glo - ry to Thee, O God. *(twice)*

9

Al - le - lu - i - a,

Al - le - lu - i - a, Al - - -

le - - - lu - i - a. Glo -

*Evlogitaria - Long Version*

ry to Thee, O God.

D C

Detailed description: This musical staff is in G major (one sharp) and 4/4 time. It begins with a treble clef and a key signature of one sharp (F#). The melody starts on D4, marked with a red 'D' above it. The notes are: D4 (quarter), E4 (quarter), F#4 (quarter), G4 (quarter), A4 (quarter), B4 (quarter), C5 (quarter), B4 (quarter), A4 (quarter), G4 (quarter), F#4 (quarter), E4 (quarter), D4 (quarter). There are two slurs: one under the first four notes (D4-E4-F#4-G4) and another under the last four notes (B4-A4-G4-F#4). The lyrics 'ry to Thee, O God.' are written below the staff, with a long horizontal line under 'to' and 'God.'. A red 'C' is placed above the final note (D4).

D

Detailed description: This musical staff is in G major (one sharp) and 4/4 time. It begins with a treble clef and a key signature of one sharp (F#). The melody starts on D4, marked with a red 'D' above it. The notes are: D4 (quarter), E4 (quarter), F#4 (quarter), G4 (quarter), A4 (quarter), B4 (quarter), C5 (quarter), B4 (quarter), A4 (quarter), G4 (quarter), F#4 (quarter), E4 (quarter), D4 (quarter). There is a slur under the first four notes (D4-E4-F#4-G4). The staff ends with a double bar line.