



POLYELEOS PSALM 134

Brief Version
First Mode

Duration: 4:45

Intonation: #1

Prestissimo ♩=200

adapted from Athonite melody

Δούλοι Κύριον

1

O ye ser - - - vants. Al - le - lu - i - a.

Praise ye the Name of the Lord; O ye ser - vants, praise

the Lord. Al - le - lu - i - a.

2

Ye that stand in the house of the Lord, in the courts of the

house of our God. Al - le - lu - i - a.

3

Praise__ ye the Lord, for the Lord__ is__ good._

Al - le - lu - i - a.

4

Chant un - to His name, for it__ is__ good._ Al - le -

lu - i - a.

5

For the Lord hath cho - sen Ja - cob un - to__ Him -

self.__ Al - le - lu - i - a.

6

Is - ra - el for His own pos - sess - - - ion.__ Al - le -

lu - i - a.

7



For I know that the Lord___ is___ great._ Al - le - lu -



i - a.

8



And that our Lord is a - bove___ all___ gods._ Al - le -



lu - i - a.

9



All that the Lord hath willed_ He hath done._ Al - le - lu -

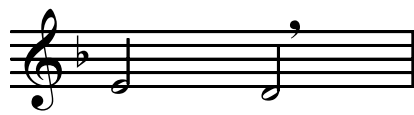


i - a.

10



In heav - en and on___ the___ earth._ Al - le - lu -



i - a.

11

D

In the seas and in all the a - byss - - - es. —

Al - le - lu - i - a.

12

D

Bring-ing clouds up from the ut - ter-most parts — of the earth. —

Al - le - lu - i - a.

13

D

Light-nings for the rain — hath He made. — Al - le - lu -

i - a.

14

D

He bring-eth winds out of His treas - ur - ies. — Al - le -

lu - i - - a.

15



He smote the first-born of E - - - gypt. Al - le -



lu - i - - a.

16



From man un - to beast. Al - le - lu - i - a.

17



He sent forth signs and mar - vels in the midst of thee, O E -



- gypt. Al - le - lu - i - a.

18



On Phar - aoh and on all his ser - - - vants. Al - le -



lu - i - - a.

19



He smote man - y na - - - tions. Al - le - lu -

i - - - a.

20

And slew__ might - y kings._ Al - le - lu - i - a.

21

Se - on, king of the Am - o - rites._ Al - le - lu -

i - - - a.

22

And Og, king of the land of Ba - - - - san._

Al - le - lu - i - - - a.

23

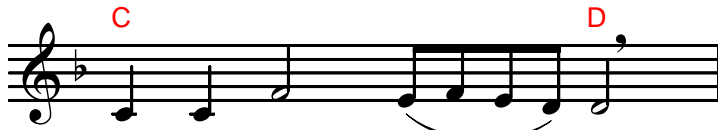
And all the king-doms of Ca - - - - naan._ Al - le -

lu - i - - - a.

24

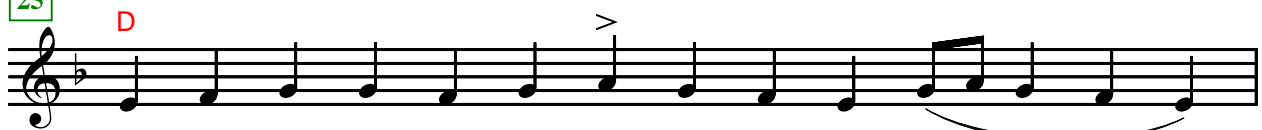


And He gave their land for an in - her - i - tance. —



Al - le - lu - i - - a.

25



An in - her - i - tance for Is - ra - el His peo - - - -



ple. — Al - le - lu - i - - - a.

26



O Lord, Thy name en - dur - eth for ev - - - - er. —



Al - le - lu - i - - a.

27



And Thy me - mo - ri - al un - to gen - er - a - tion and gen - er -



a - - - - tion. — Al - le - lu - i - - a.

28



For the Lord will judge His peo - - - - ple. — Al - le -



lu - i - a.

29



And be-cause of His ser - vants shall He be com - fort -



ed. — Al - le - lu - i - a.

30



The i - dols of the na - tions are sil - ver and gold,



the works of the hands — of — men. — Al - le - lu -



i - a.

31



They have a mouth — but shall not — speak. Al - le -



lu - i - a.

32



Eyes have they and shall not see. Al - le -



lu - i - a.

33



Ears have they and shall not hear. Al - le -



lu - i - a.

34



Nor is there an - y breath in their mouth. Al - le - lu -



i - a.

35



Let those that make them be - come like un - to them. Al - le -

lu - i - a.

36

And all they that put their trust___ in___ them._ Al - le -

lu - i - a.

37

O house of Is - ra - el, bless___ ye the Lord. Al - le -

lu - i - a.

38

O house of Aar - on, bless___ ye the Lord. Al - le - lu -

i - a.

39

O house of Le - vi, bless___ ye the Lord. Al - le - lu -

i - a.

40

Ye that fear the Lord, bless_ ye the Lord._ Al - le - lu -

i - a.

41

Bless - ed is the Lord_ out of Si - on, Who dwell - eth

in Je - ru - sa - lem.

(The second choir chants the final Alleluia so that the first choir may begin the next psalm.)

42

Al - le - lu - i - a.

Continue immediately with Psalm 135 on page 888 or 888.