



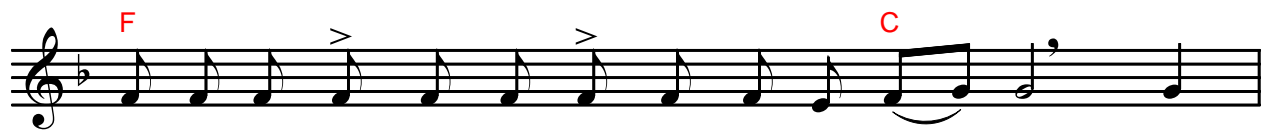
SLOW PRAISES

Grave Mode

Andante ♩=88

Verse #1

Τοῦ ποιῆσαι ἐν αὐτοῖς



To do a - mong them the judg - ment that is writ - ten. This



glo - ry shall be to all



His saints.

Praises #1

Ἀνέστη Χριστός



Christ is ris - en from the dead, and hath

Grave Mode - Slow Praises

loosed the bonds of death. Pro - claim, O

earth, the good tid - ings of great

joy; praise, O ye Heav - - - ens, the

glo - - - - ry of God.

Verse #2*Αἰνεῖτε τὸν Θεόν*

Praise ye God in His saints, praise Him in the

firm - - - - a - ment of His

pow - - - - er.

Praises #2

Ἀνάστασιν Χριστοῦ



Musical staff with notes and chords F, C, G. The staff is in a key with one flat (B-flat) and a common time signature. The notes are: F4 (quarter), G4 (quarter), A4 (quarter), Bb4 (quarter), C5 (quarter), Bb4 (quarter), A4 (quarter), G4 (quarter), F4 (quarter), E4 (quarter), D4 (quarter), C4 (quarter).

Let us who have be - held the Res - ur -



Musical staff with notes and chords C, D. The notes are: C4 (quarter), Bb4 (quarter), A4 (quarter), G4 (quarter), F4 (quarter), E4 (quarter), D4 (quarter), C4 (quarter), Bb4 (quarter), A4 (quarter), G4 (quarter), F4 (quarter), E4 (quarter), D4 (quarter), C4 (quarter).

rec - - - - tion of Christ wor - - - -



Musical staff with notes and chords C, F, C. The notes are: C4 (quarter), Bb4 (quarter), A4 (quarter), G4 (quarter), F4 (quarter), E4 (quarter), D4 (quarter), C4 (quarter), Bb4 (quarter), A4 (quarter), G4 (quarter), F4 (quarter), E4 (quarter), D4 (quarter), C4 (quarter).

ship our ho - ly Lord Je - - - -



Musical staff with notes and chords D, Un. The notes are: D4 (quarter), C4 (quarter), Bb4 (quarter), A4 (quarter), G4 (quarter), F4 (quarter), E4 (quarter), D4 (quarter), C4 (quarter), Bb4 (quarter), A4 (quarter), G4 (quarter), F4 (quarter), E4 (quarter), D4 (quarter), C4 (quarter).

sus, Who is a - lone with - out



Musical staff with notes. The notes are: C4 (quarter), Bb4 (quarter), A4 (quarter), G4 (quarter), F4 (quarter), E4 (quarter), D4 (quarter), C4 (quarter).

sin.

Verse #3

Αἰνεῖτε αὐτὸν ἐπὶ ταῖς δυναστείαις



Praise Him for His might-y acts, praise Him ac-cord - ing to the



mul - - - ti - tude of _____ His



great - - - - ness.

Praises #3

Χριστοῦ τὴν ἀνάστασιν



We___ shall. not_____ cease from___ wor - ship -



ping___ the Res - ur - rec - - - tion_____ of___



Christ;___ for He_ hath saved___ us from_____

our_____ in - iq - - - ui - - - ties,

e - ven the ho - ly Lord_ Je - - -

sus, Who hath shown_____ us_ the Res -

ur - rec - - - - tion.____

Verse #4

Αἰνεῖτε αὐτὸν ἐν ἤχῳ σάλπιγγος

Praise Him with the sound of trum - pet, praise Him with the

psal - ter - y and_ harp.

Praises #4

Τί ἀνταποδώσωμεν

What_ shall we_ ren - - - - der_ un -

to the_ Lord for all that_ He_ hath

ren - dered_ un - to_ us? For our_

sakes God_ came_ a - mong_

men; for the sake_ of cor - rupt - ed_ na - - -

ture, the Word_ be - came flesh_ and_

dwelt_ a - mong_ us. Un - to the un -

grate - ful He _____ was the Ben - e -

fac - - - - tor; un - to the pris - on - ers, the

Lib - er - a - tor; un - to those__ that sat__

in__ dark - - - - ness,__ the Sun__ of__

Right - eous - ness; up - on the Cross, the Im -

pas - si - ble__ One; in Ha - - - - des,__

the__ Light; in death, the__ Life; the Res -

Grave Mode - Slow Praises

ur - rec - tion__ for the fall - - - en.

Let us cry__ to__ Him:__ O our God,__

glo - ry__ be__ to__ Thee.

Hard Chromatic

F **G** **D** **Un.** **F**

Verse #5

Αἰνεῖτε αὐτὸν ἐν τυμπάνῳ

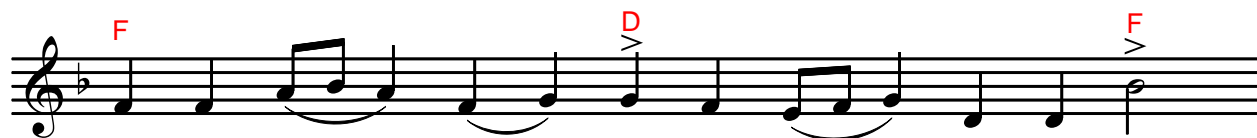
Praise Him with tim - brel and dance, praise__

Him__ with__ strings__ and__ flute.

F **C** **D** **Un.** **F**

Praises #5

Πύλας ᾄδου



Thou hast crushed_ the_ gates of Ha - des, O Lord,



and_ hast_ de - stroyed the do - min - - - -



ion of_ death_ by Thy might - y



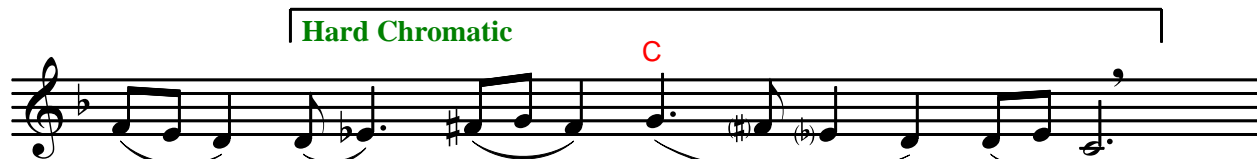
pow - - - er. And by Thy di - vine and_ glo -



ri - ous_ Res - ur - rec - - - - tion,



Thou hast raised_ up_ with_ Thy - self the dead_



who_ slept_ in_ dark - - - - ness_

D Un. F G
 from ag - - - es past, since
 Thou art the King of all
 C Un.
 and Al - might - - - y God.

Verse #6

Αινεῖτε αὐτὸν ἐν κυμβάλοις

F
 Praise Him with tune - ful cym - bals, praise Him with cym - bals of
 C D
 ju - bi - la - tion. Let ev - - - ery
 Un. F
 breath praise the Lord.

Praises #6

Δεῦτε ἀγαλλιασώμεθα

F *C* *Un.*

Come, let us re - jice in the

F *D* *C*

Lord, and be glad in His Res - ur -

Un. *F* *D* *C* *D*

rec - - - - tion; for with Him - self He

C

raised up the dead from the in - dis -

D *C* *Un.* *F*

sol - - - - u - ble bonds of Ha - - - -

C *D* *C*

des, and, as God, He hath grant - - ed to

C

the world life ev - er - last - ing

Grave Mode - Slow Praises

Un. F

and great mer - - - cy.

Verse #7

Ἀνάστηθι Κύριε

F C

A - rise, O Lord my God, let Thy hand be lift - ed high; for -

> F

get not Thy pau - pers to the end.

Praises #7

Ἐξαστράπτων Ἄγγελος

F G C

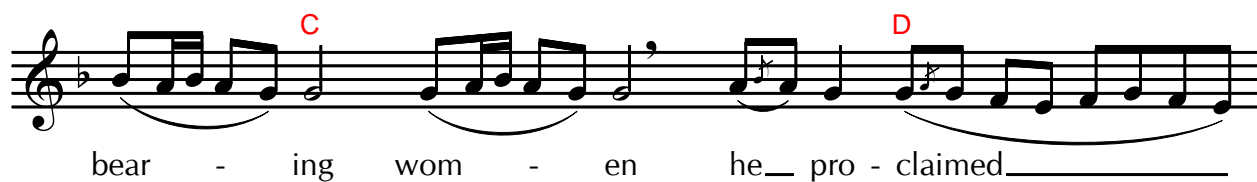
A re - splend - ent An - - - gel sat

F

up - on the stone of the Life -

C F

re - ceiv - ing tomb, and un - to the myrrh -



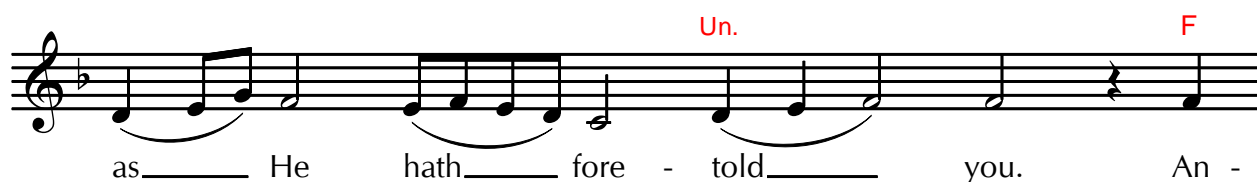
bear - ing wom - en he__ pro - claimed



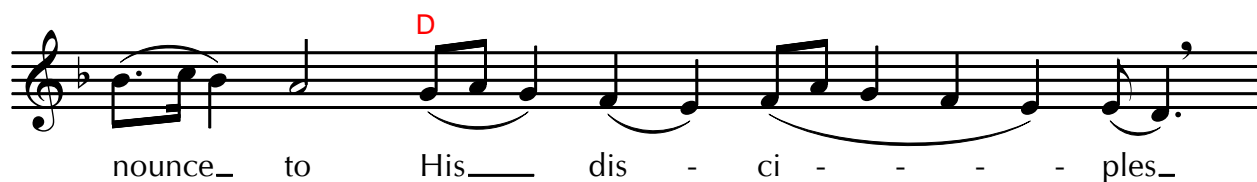
the__ good__ tid - ings, say - - - - ing:



The Lord__ is__ ris - - - - en, e - ven__



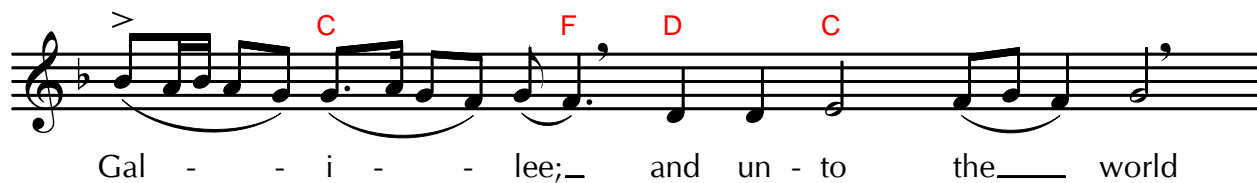
as__ He hath__ fore - told__ you. An -



nounce__ to His__ dis - ci - - - - ples__



that He go - eth be - fore__ you__ in - to



Gal - - i - - - lee;__ and un - to the__ world

He___ grant - eth___ life_ ev - er - last -
 ing and___ great mer - - - - cy.

Verse #8

Ἐξομολογήσομαί σοι

I will con-fess Thee, O Lord, with my whole heart; I___
 will___ tell___ of all___ Thy won - - - - ders.

Praises #8

Τί ἀπεδοκιμάσατε

Why___ have ye___ re - ject - - - - ed
 the___ Chief_ Cor - ner - stone, O ye law - - - -



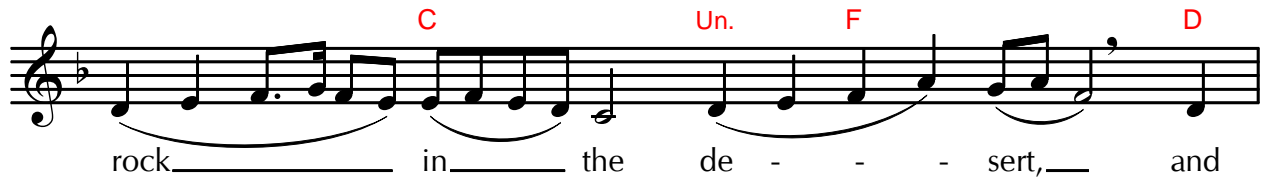
less Jews? This is the Stone which



God hath set in Si - - - on, Who



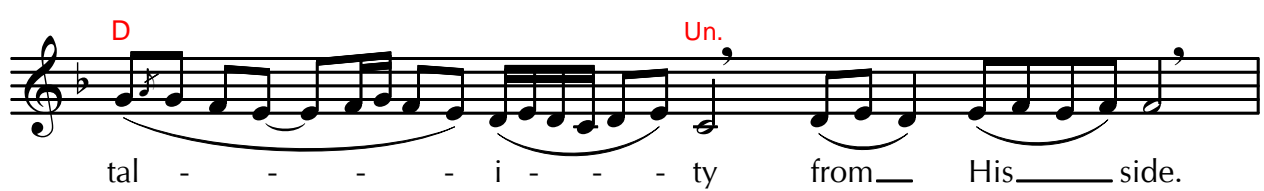
welled forth wa - - - ter from the



rock in the de - - - sert, and



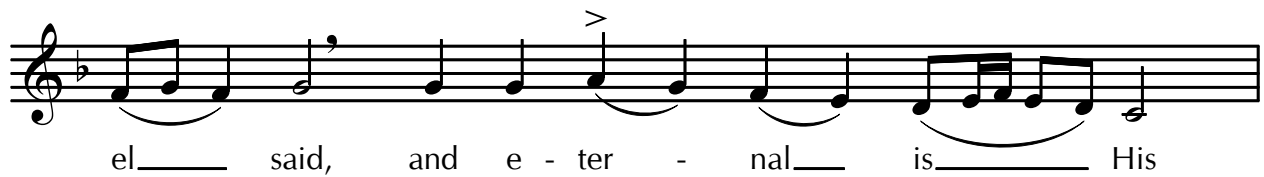
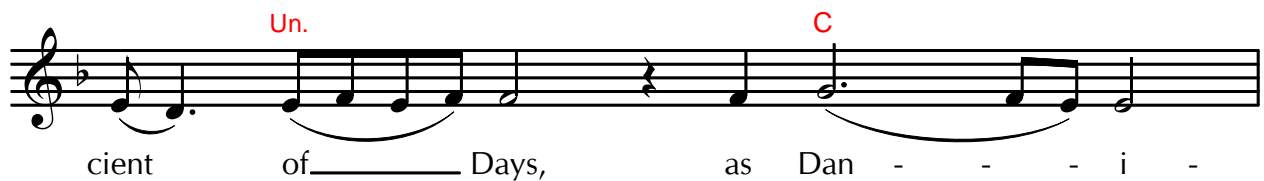
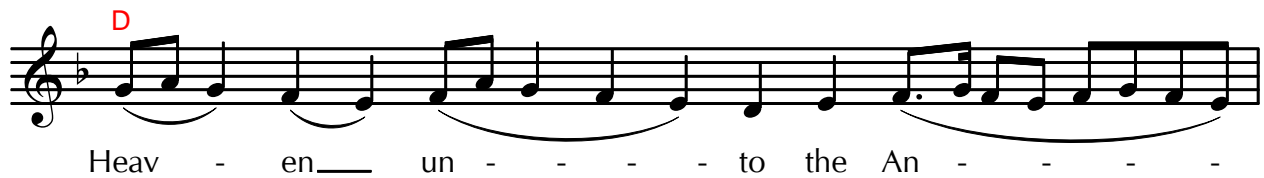
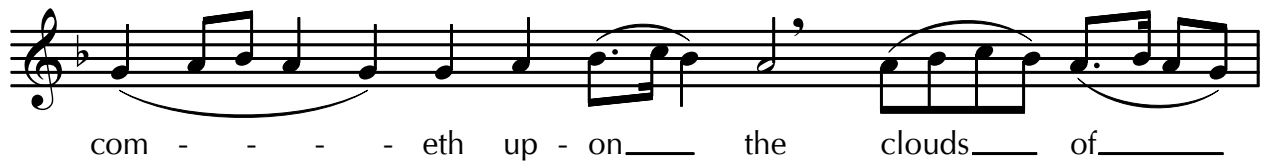
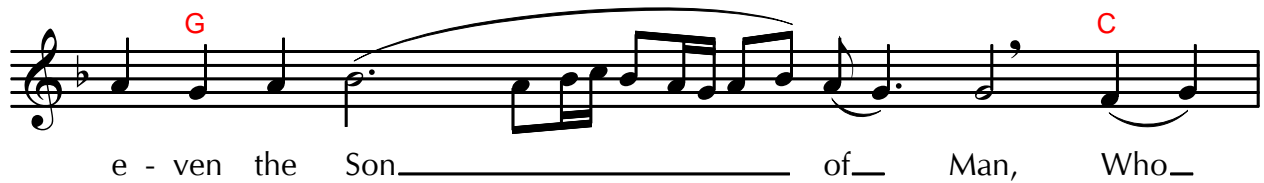
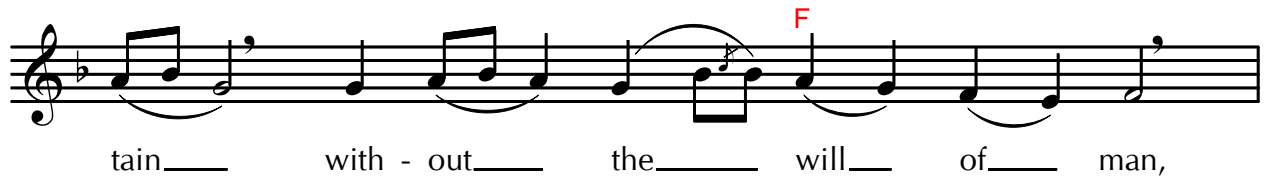
Who, for us, doth gush forth im - mor -



tal - - - i - - - ty from His side.



This is the Stone which was



Un.

King - - - - dom.

The image shows a single staff of music in a treble clef with a key signature of one flat (B-flat). The melody consists of six notes: a quarter note G4, a quarter note A4, a quarter note B4, a quarter note C5, a dotted quarter note B4, and a final quarter note G4. A slur is placed under the first four notes (G4, A4, B4, C5). The lyrics 'King - - - - dom.' are written below the staff, with four hyphens corresponding to the first four notes. The word 'Un.' is written in red above the first note.