



HYMNS OF ASCENT

Grave Mode

Intonation: #21

Allegro ♩=160

Τὴν αἰχμαλωσίαν Σιών

1

C D

Hav - ing turned the cap - tiv - i - ty of Si - on a -

C Un. C

way - from er - ror, do Thou, O Sav - iour, quick - en me

F D

al - so, de - liv - er - ing me from slav - er - y

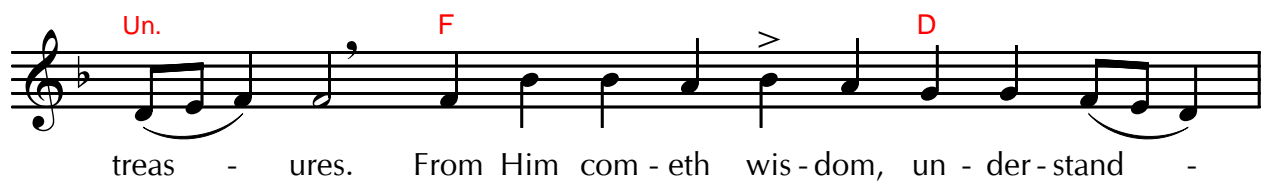
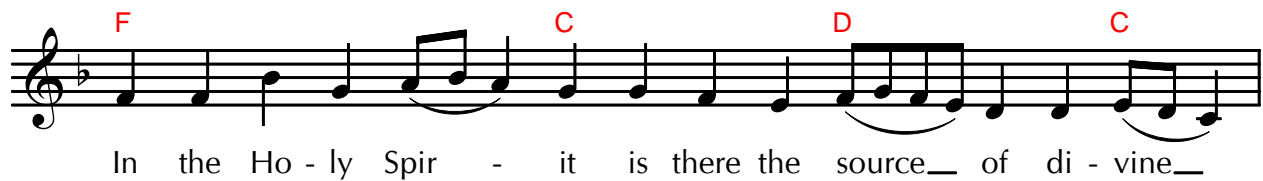
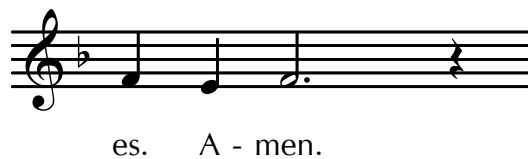
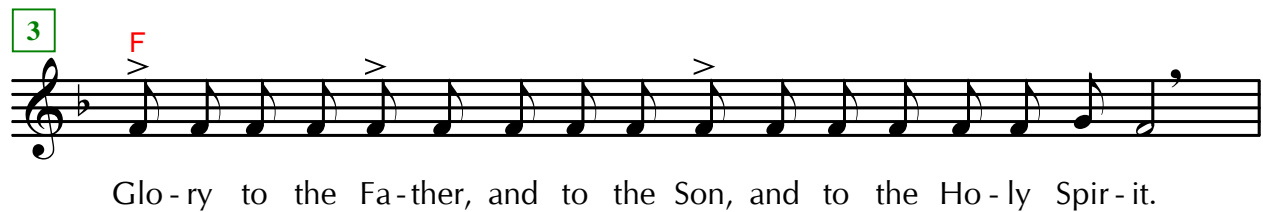
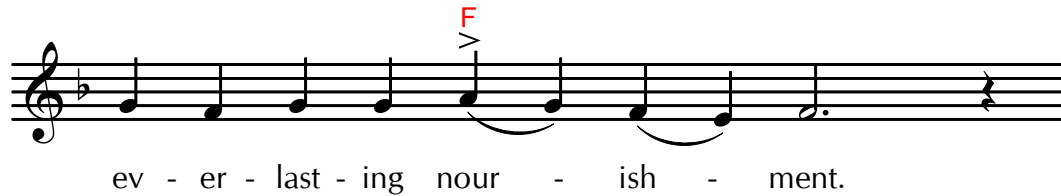
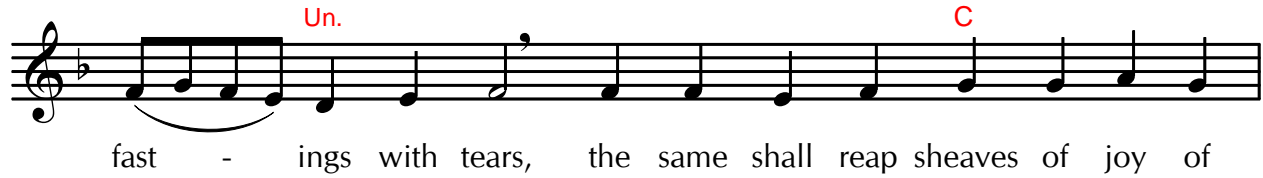
C Un.

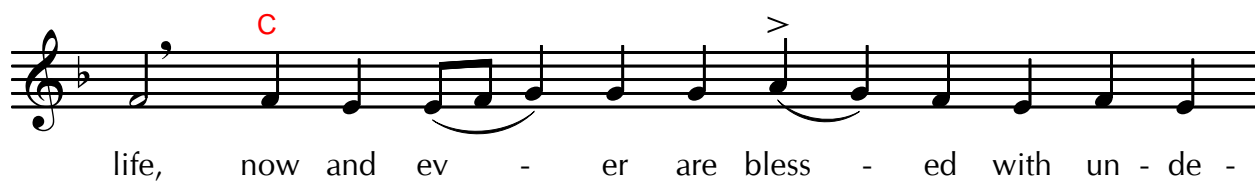
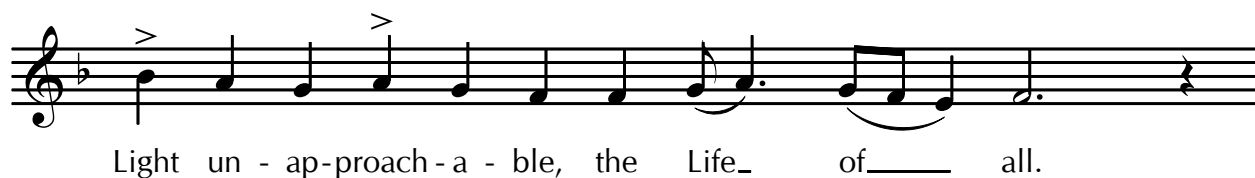
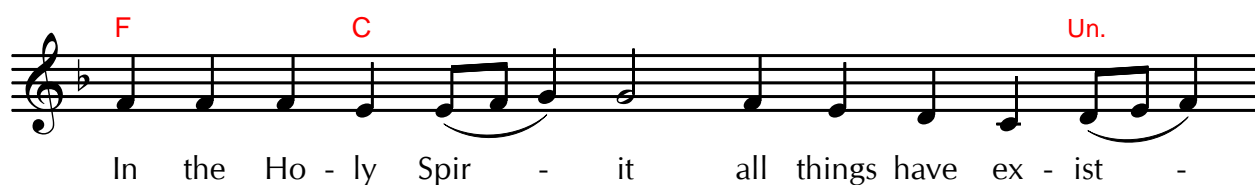
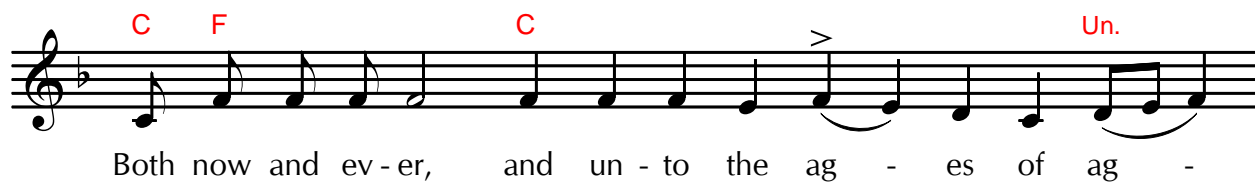
to the pas - sions.

2

C

In the south, he that sow - eth af - flic - tions and





8

See - ing thine off - spring round a - bout thy ta - ble_ as

branch - es, re - joice and be glad, of - fer - ing

them_____ to Christ,_ O__ chief shep - herd.

9

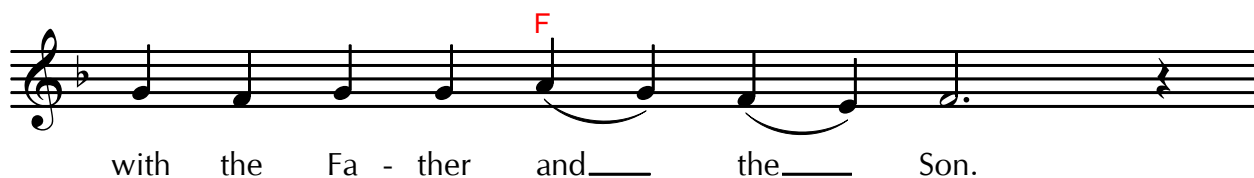
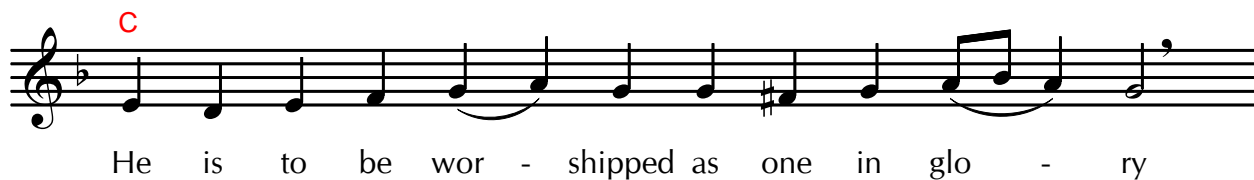
Glo - ry to the Fa - ther, and to the Son, and to the Ho - ly Spir - it.

Both now and ev - er, and un - to the ag - es of ag -

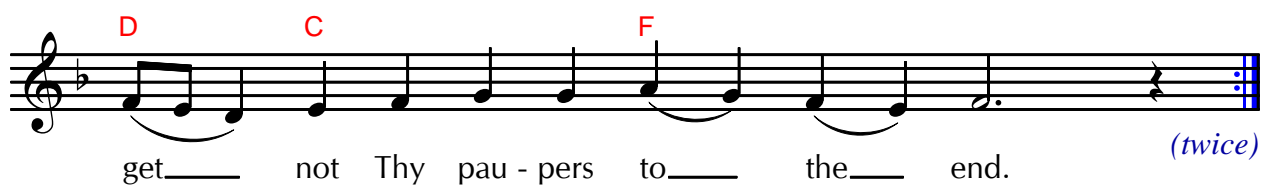
es. A - men.

In the Ho - ly Spir - it there is a depth of gifts, a

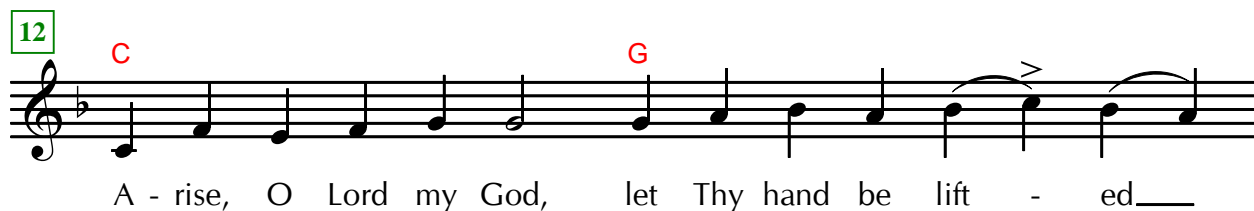
wealth of glo - ry, a great a - byss of judg - ments; for



10 and 11



Canonarch:



The image shows a musical score for a hymn. The first staff is a single melodic line in G major (one sharp) on a treble clef. It begins with a green asterisk above the first note (G4) and a red 'C' above the second note (A4). The melody consists of: G4 (quarter), A4 (quarter), B4 (quarter), C5 (quarter), B4-A4 (beamed eighth notes), G4 (quarter), F#4 (quarter), E4 (quarter), D4 (half). There is an accent (>) above the F#4 note. A slur covers the last four notes (B4, C5, B4, A4). Below the staff, the lyrics are: 'high; for - get_____ not Thy pau - pers to the end._____'. The second staff begins with a red 'Un.' above the first note (G4). The melody consists of: G4 (quarter), A4 (quarter), B4 (quarter), C5 (quarter), followed by a double bar line. A slur covers the first four notes. Below the staff, there is a horizontal line.

high; for - get_____ not Thy pau - pers to the end._____

Un.

** According to some traditions, the second half of this final verse is completed by the other choir.*