



ΚΑΘΙΣΜΑΤΑ

Fourth Mode

Allegro ♩=160

Soft Chromatic

Ἄναβλέψασαι τοῦ τάφου



Be - hold - ing the en - trance to the grave, and un - a - ble to



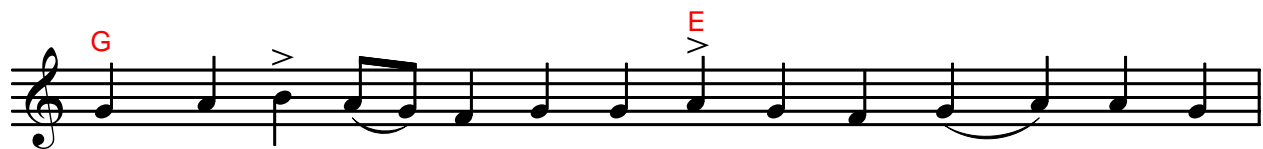
bear the flame_ of the An - gel, the myrrh - bear - ers



stood in awe with trem - bling, and they said: Was He sto - len_ per -



chance, Who o - pened Par - a - dise to the thief? Hath He ris - en per -



chance, Who e - ven_ be - fore the Pas - sion pro - claimed_ His A -

Fourth Mode - Kathismata

ris - ing? Tru - ly Christ_ God_ is ris - en, grant - ing

life and res - ur - rec - tion to those in Ha - des.

Hard Chromatic Fourth Mode

Glo - ry to the Fa - ther, and to the Son, and to the

Ho - ly Spir - it.

Ἐκουσία σου βουλή

Of Thine own free will, O Lord, Thou didst en - dure death

on the Cross and by mor - tal men_ wast laid in

a new sep - ul - chre of stone, Who with a word didst es - tab - lish

the world's_ foun - da - - - tions. The al - i -

en_ was bound and death was mis - 'ra - bly

stripped_ of_ all_ his spoils; all those whom Ha -

des_ held cried out to praise Thy Res - ur - rec - tion,

which bring - eth life un - to all_ man - kind: Christ

God_ is ris - - - en, the Life - be - stow - er,

Who a - bid - eth_ for ev - - - - er.



Both now and ev - er, and un - to the ag - es of



ag - es. A - men.

Κατεπλάγη Ἰωσήφ



Jo - seph was a - mazed_ to see that which tran - scend - ed



na - ture's bounds, for with - out_ seed, thou, - O Maid, didst



both con - ceive and bear a Child. And he re - mem - bered the blos - som -



ing rod_ of Aa - - - ron, the dew up -



on_ the fleece, and the un - burn - ing_ bush

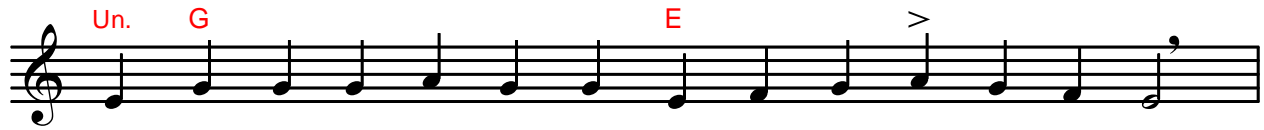


which_ was_ not_ con - sumed, though it was all_

a - flame. Thus, thy pro - tec - tor and be - trothed_ cried,
as he bare wit - ness be - fore_ the_ priests: A
Vir - gin bear - - - eth, and af - ter child - birth,
still re - main - eth_ a Vir - - - - gin.

Soft Chromatic Fourth Mode

Ἀνέστης ὡς ἀθάνατος



Since Thou art im - mor - tal, Thou didst rise from Ha - des, O Lord;



and with Thee, O Sav - iour, Thou didst raise Thy world by Thy Res - ur -



rec - tion, O Christ — our God. Thou in strength didst smite down



and de - stroy — death's do - min - ion, show - ing, O most Mer - ci -



ful, Thy dread — Res - ur - rec - tion to all; for which we



glo - ri - fy Thee, O on - ly Friend — of man.

Hard Chromatic Fourth Mode



Glo - ry to the Fa - ther, and to the Son, and to the



Ho - ly Spir - it.

Ἐκ τῶν ἄνω κατελθὼν



The Lord's An - gel Ga - bri - el de - scend - ed from the



heights a - bove to the tomb_ hewn out_ of rock where -



in the Rock of Life was laid; and he, ar - rayed in white, cried to



the weep - ing wom - - - en: no long - er



make_ la - ment; leave off your mourn - ful_ cries,

ye — who — ev - er have a - bun - dant sym -

pa - thy. He Whom ye seek with tears and sigh - ings

is tru - ly ris - en; take cour - age — now. Where -

fore, — pro - claim — ye to the A - pos - tles

that the Lord hath — a - ris - - - - en.

Both now and ev - er, and un - to the ag - es of

ag - es. A - men.

He that by com - mand_ a - lone hold - eth to - geth - er

all the world as a mor - tal babe_ is held, O

pure one, in thy chaste em-brace; and He that in His in - ef - fa -

ble good - ness feed - - - eth all things en -

dowed_ with breath is fed with milk_ from_ thee;

be - ing_ ere_ all time, He yet be - gin -

neth_ now. All the an - gel - ic choirs are awe - struck

at thy con - cep - tion's dread mys - ter - y; they

The image shows a musical score for a piece titled "Fourth Mode - Kathismata". It consists of two staves of music in a single system. The key signature has two flats (B-flat and E-flat), and the time signature is not explicitly shown but appears to be common time. The first staff begins with a treble clef and a key signature change from two flats to one flat (F major). The melody starts with a quarter note G4, followed by eighth notes A4, B4, and C5, then a quarter note B4, and a half note A4. A slur covers the next four notes: G4, F4, E4, and D4. A fermata is placed over the D4 note, which is marked with a red "D". The lyrics "glo - ri - fy" are aligned under the first four notes, and "thee as God's true Moth - er" are aligned under the remaining notes. The second staff continues the melody with a quarter note D4, followed by quarter notes C4, B3, A3, and G3. A slur covers the next four notes: F3, E3, D3, and C3. A fermata is placed over the C3 note, which is marked with a red "G". The lyrics "and ex - tol thee" are aligned under the first four notes, and "with prais - - - es." are aligned under the remaining notes. There are some musical markings: a fermata over the first note of the second staff, a fermata over the last note of the second staff, and a red "D" and "G" above the notes. The lyrics are hyphenated across the notes.

glo - ri - fy_____ thee as God's true Moth - er

and ex - tol thee___ with prais - - - - es.