

# CHERUBIC HYMN

Duration: 6:30 + 1:30 + 1:00

Third Mode

Intonation: #8

by Gregory Levitis (1777-1822)  
the Presiding Protopsaltis of the  
Patriarchate of Constantinople (1819-1822)

Adagio  $\text{♩} = 70$

Un. F C F

Let us \_\_\_\_\_  
Οι τα \_\_\_\_\_  
ee tah \_\_\_\_\_

D E F D

\_\_\_\_\_ who \_\_\_\_\_  
\_\_\_\_\_ χε - - - - - (ve) - - - - -  
\_\_\_\_\_ heh - - - - - (neh) - - - - -

C F C F C

\_\_\_\_\_ let us \_\_\_\_\_  
\_\_\_\_\_ χε - - - - - ρου - - - - - οι τα χε - ρου -  
\_\_\_\_\_ heh - - - - - roo - - - - - ee tah heh - roo -

F D

\_\_\_\_\_ who \_\_\_\_\_ my - - - - -  
\_\_\_\_\_ βι - - - - - (vi) - - - - - μ μυ - - - - -  
\_\_\_\_\_ vee - - - - - (nee) eem mee - - - - -

C

\_\_\_\_\_ - sti - c'ly \_\_\_\_\_  
\_\_\_\_\_ - σι - κως \_\_\_\_\_  
\_\_\_\_\_ - stee - kos \_\_\_\_\_

F G

rep - re - sent \_\_\_\_\_  
ει - κο - νι - - - - - ζο - - - - -  
ee - ko - nee - - - - - zo - - - - -

*Cherubic Hymn - Third Mode - Gregory*



rep - re - sent  
 ετ - κο - νι - ζον -  
 ee - ko - nee - zo -



the  
 τε - - - (ve) - ες και (χαι)  
 ndeh - - - (neh) es keh (heh)



Che - - -  
 τη  
 tee



the Che - - - ru -  
 και τη ζω - ο - - - ποι -  
 keh tee zo - ο - - - pee -



bim and chant  
 ω τρι - α - - - -  
 o tree - ah - - - -



and chant  
 τρι - α - - - -  
 tree - ah - - - -



and chant the thrice -  
 - (ve) τρι - α - - - δι - - - (vi) τον τρι -  
 - (neh) tree - ah - - - dhee - - - (nee) ton tree -

*Cherubic Hymn - Third Mode - Gregory*



ho - - - - ly the thrice - ho - ly hymn  
 σα - - - - γι - τον τρι - σα - γι - ον  
 sah - - - - yee - ton tree - sah - yee - on



to  
 υ - - - -  
 ee - - - -



to the - life - giv -  
 - μνον προ - σα -  
 - mnon pro - sah -



ing Trin - i - ty  
 δο - - - προ - σα - δον - τε - - - (νε) - - - ες  
 dho - - - pro - sah - dho - nde - - - (neh) - - - es



now lay a side  
 πα - - - σαν την βι -  
 pah - - - san teen vee -



now lay a side  
 ω - - - τι την βι - ω - τι - κη -  
 o - - - tee teen vee - o - tee - kee -



ev - 'ry earth -  
 (νη) - - - ην α - πο - θω - - - με - α - πο -  
 (nee) een ah - po - tho - - - meh - ah - po -

*Cherubic Hymn - Third Mode - Gregory*



*Cherubic Hymn - Third Mode - Gregory*



may \_\_\_\_\_ re - - -  
 λε - - - - - (ve) - βα - σι - λε - - - -  
 leh - - - - - (neh) - vah - see - leh - - - -

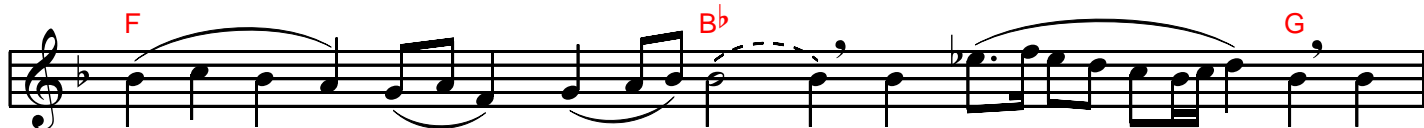


ceive \_\_\_\_\_ the King \_\_\_\_\_ X X of  
 α - - - - - (να) \_\_\_\_\_ των ο - - - - λων υ - πο - δε -  
 ah - - - - - (nah) \_\_\_\_\_ ton ο - - - - lon ee - po - dhek -



all \_\_\_\_\_  
 ξο - - - - με - - - - νοι \_\_\_\_\_  
 so - - - - meh - - - - nee \_\_\_\_\_

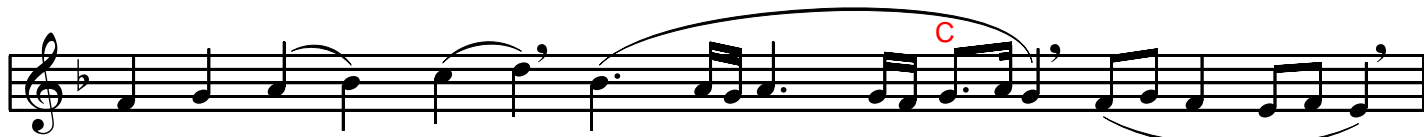
*After the Great Entrance:*



in - - - vis - i - bly \_\_\_\_\_ es - cor - - - - ted by  
 ταις αγ - γε - λι - κταις α - ο - ρα - - - - τως δο -  
 tes \_\_\_\_\_ ah - ngeh - lee - kes ah - o - rah - - - - tos dho -



the an - ge - - - - lic or - - - - ders \_\_\_\_\_  
 ρυ - φο - ρου - - - - με - - - - νον τα - - - - ξε - σιν \_\_\_\_\_  
 ree - fo - roo - - - - meh - non tah - - - - kseh - seen \_\_\_\_\_



al - le - lu - i - a \_\_\_\_\_  
 αλ - λη - λου - ι - α \_\_\_\_\_  
 ah - lee - loo - ee - ah \_\_\_\_\_



*(continue with anaphora  
 on page 323 or 327)*

