

# CHERUBIC HYMN

Duration: 5:00 + 1:00 + :45

## First Mode

Intonation: #1 or #15

by Theodore Papaparaschou  
"Phokaeus" (1790-1851)

Adagio  $\text{♩} = 76$

Let us who  
Οι τα χε - ρου - βιμ  
ee tah he - roo - veem

let us who  
χε - ρου - βιμ  
heh - roo - veem

my  
μυ  
mee

sti - c'ly  
στι - κως  
stee - kos

rep - re - sent  
ετ - κο - νι  
ee - ko - nee

ko - vi  
ko - nee

\* The notes between the two brackets may be omitted for brevity.

*Cherubic Hymn - First Mode - Phokæus*

rep - re - sent  
 ζο - ει - κο - νι -  
 zo - ee - ko - nee -

the  
 ζον - τες και τη ζω  
 zo - ndes keh tee zo

Che - ru the Che - ru -  
 ο - ποι - ζω - ο - ποι -  
 ο - pee - zo - ο - pee -

bim and chant  
 ω Τρι - α -  
 ο tree - a -

- - - - -

and chant the thrice -  
 Τρι - α - - - - - δι τον τρι -  
 tree - ah - - - - - dhee ton tree -

ho - ly hymn to the X life - giv -  
 σα - γι - ον υ - μνον προ - σα -  
 sah - yee - on ee - mnon pro - sah -

*Cherubic Hymn - First Mode - Phokæus*



- - - - - the life - giv -  
 - - - (να) - - - - - δο - - - - υ - μνον προ - σα -  
 - - - (nah) - - - - - dho - - - - ee - mnon pro - sah -



- - - - - ing - - - - Trin - - - -  
 - - - - δον - - - - τες - - - - πα - - - -  
 - - - - dhon - - - - des - - - - pah - - - -



i - - - ty - - - now - - - lay - - - now lay - a -  
 - - - σαν - - - την βι - ω - - - τι - - - βι - ω - τι -  
 - - - san - - - teen vee - o - - - tee - - - vee - o - tee -



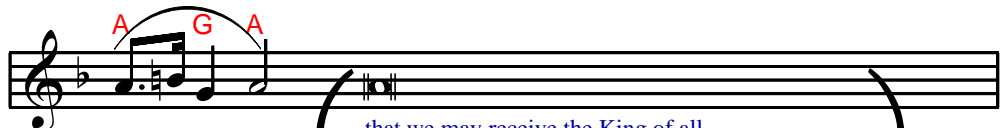
side - - - ev - 'ry earth - - - ly - - -  
 κην - - - α - πο - θω - - - με - - -  
 keen - - - ah - po - tho - - - meh - - -



care - - -  
 θα - - - με - - - ρι - - -  
 thah - - - meh - - - ree - - -



- - - ev - 'ry - earth - ly - care -  
 - - - - - - - με - ρι - μναν -  
 - - - - - - - meh - ree - mnan -



that we may receive the King of all  
 ὡς τὸν Βασιλέα τῶν ὅλων ὑποδεξόμενοι  
 os ton va-see-leh-ah ton o-lon ee-po-dhek-so-men-ee

*For brevity, the words in parentheses may be chanted in a monotone, or as on the following page if time allows:*

*Cherubic Hymn - First Mode - Phokæus*

Andante ♩=88

that \_\_\_\_\_ we may \_\_\_\_\_ re - ceive \_\_\_\_\_  
 ως \_\_\_\_\_ τον βα - - - σι - λε - - - -  
 os \_\_\_\_\_ ton vah - - - see - leh - - - -

\_\_\_\_\_

- - - (χε) - - - - -  
 - - - (heh) - - - - -

re - ceive \_\_\_\_\_  
 - - - α \_\_\_\_\_ των ο - - - - λων \_\_\_\_\_ υ -  
 - - - ah \_\_\_\_\_ ton ο - - - - lon \_\_\_\_\_ ee -

the \_\_\_\_\_ King \_\_\_\_\_ of \_\_\_\_\_ all  
 πο - δε - ξο - - - με - - - νοι  
 po - dhe - kso - - - me - - - nee

*After the Great Entrance:*

Adagio ♩=76

in - - - vis - i - bly \_\_\_\_\_ es - cor - - -  
 ταις \_\_\_\_\_ αγ - γε - λι - καις α - ο - ρα - - -  
 tes \_\_\_\_\_ ah - nge - lee - kes ah - o - rah - - -

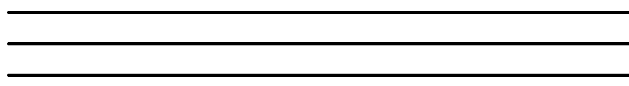
*Cherubic Hymn - First Mode - Phokæus*



ted \_\_\_\_\_ by the an - ge - - - - lic\_\_ or - - -  
 τως \_\_\_\_\_ δο - ρυ - φο - ρου - - - - με - von\_\_ τα - - -  
 tos \_\_\_\_\_ dho-ree - fo - roo - - - - meh - non\_\_ tah - - -



- - - ders. Al - - - le - lu - - - - i - a. \_\_\_\_\_  
 ξε - - - σιν Αλ - - - λη - λου - - - - ι - α \_\_\_\_\_  
 xeh - - - seen ah - - - lee - loo - - - - ee - ah \_\_\_\_\_



*(continue with anaphora  
 on page 303, 307, or 311)*

