

ENTRANCE HYMNS AND SECOND ANTIPHONS FOR FEAST DAYS

Second Mode

Traditional Melodies
English Adaptations by
Hieromonk Ephraim

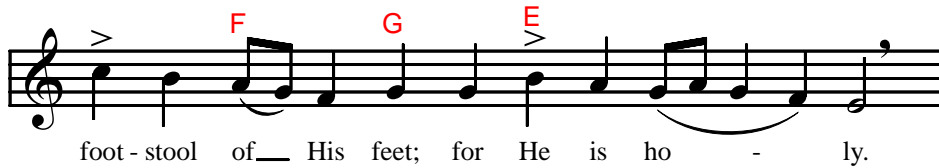
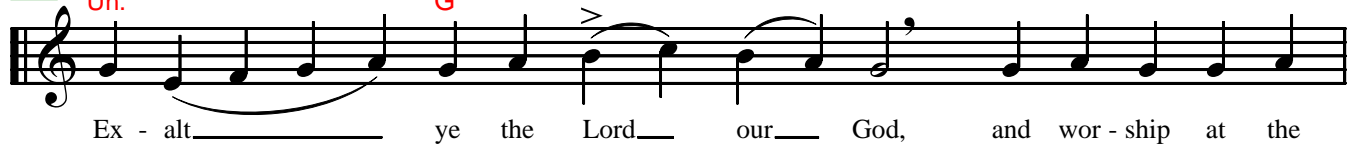
Allegro ♩=130

September 14
The Exaltation of the Cross

A1

Un.

G



December 25
The Nativity of the Lord

B1

Un.

G



Entrance Hymns for Feast Days

The Lord hath sworn and will not re - pent: Thou art a priest for - ev - er,
aft - er the or - der of Mel - chiz - e - dek.
Save us, O Son of God, Who wast born of the Vir - gin, as we chant
to Thee: Al - le - lu - i - a.

*January 1 The Circumcision of the Lord**

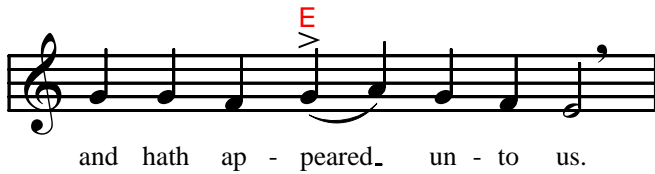
Save us, O Son of God, Who wast cir - cum - cised in the flesh,
as we chant to Thee: Al - le - lu - i - a.

* Note that this feast day has the regular entrance hymn: "Come let us worship" (see page 126), but it concludes with the words: "Who wast circumcised in the flesh. . ." as written here.

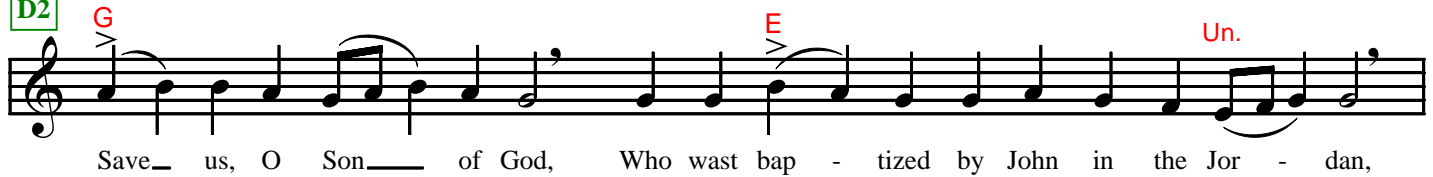
Entrance Hymns for Feast Days

January 6
Theophany

D1

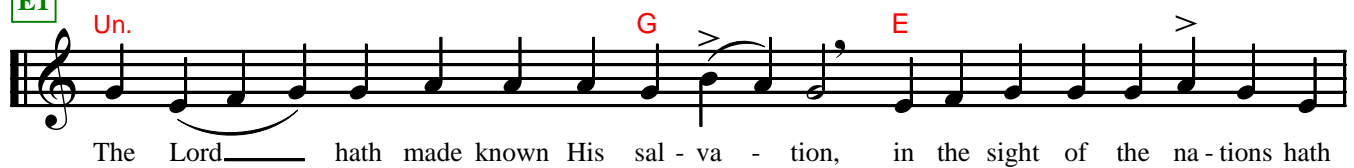


D2



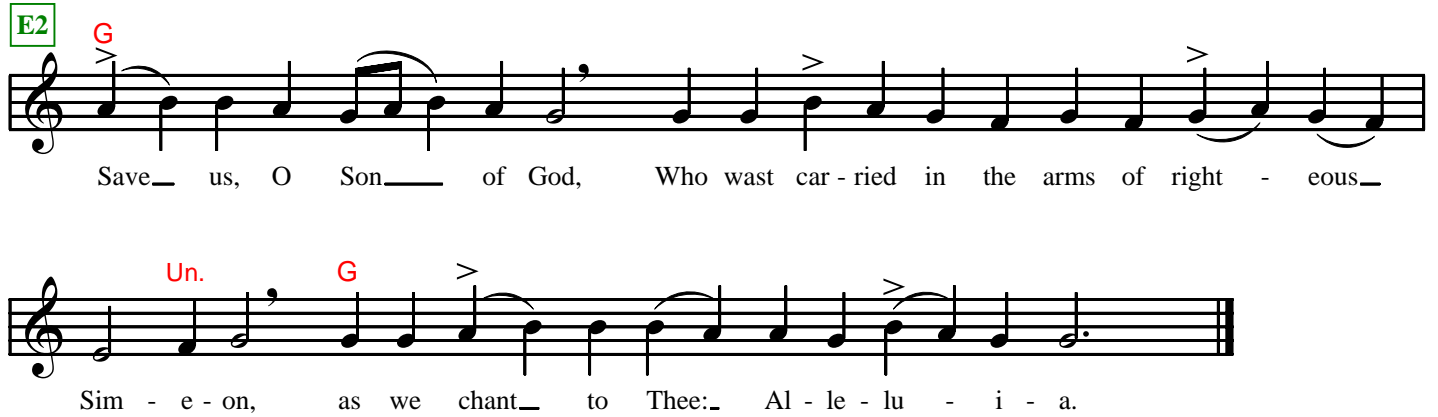
February 2
The Meeting of the Lord
in the Temple

E1



Entrance Hymns for Feast Days

E2




Save_ us, O Son_ of God, Who wast car - ried in the arms of right - eous_

Sim - e - on, as we chant_ to Thee:_ Al - le - lu - i - a.

Detailed description: This block contains the musical notation for hymn E2. It consists of two staves. The first staff begins with a treble clef and a key signature of one sharp (F#). The melody starts on G4, marked with a red 'G' and an accent. It proceeds with eighth and quarter notes, including a half note on B4. The lyrics 'Save_ us, O Son_ of God, Who wast car - ried in the arms of right - eous_' are written below. The second staff continues the melody, starting on G4, marked with a red 'G' and an accent. It includes a half note on B4 and ends with a double bar line. The lyrics 'Sim - e - on, as we chant_ to Thee:_ Al - le - lu - i - a.' are written below.

March 25 The Annunciation

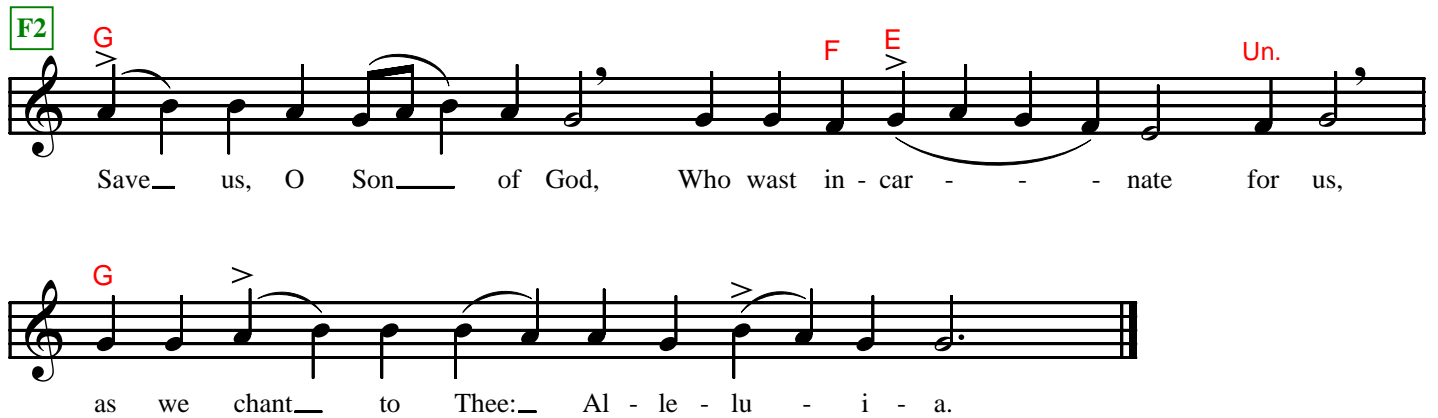
F1



Pro - claim_ from day to day the good ti - dings of the sal - va - tion

of_ our God.

F2



Save_ us, O Son_ of God, Who wast in - car - - - nate for us,

as we chant_ to Thee:_ Al - le - lu - i - a.

Detailed description: This block contains the musical notation for two hymns, F1 and F2. Hymn F1 consists of two staves. The first staff begins with a treble clef and a key signature of one sharp (F#). The melody starts on G4, marked with a red 'G' and an accent. It includes a half note on B4. The lyrics 'Pro - claim_ from day to day the good ti - dings of the sal - va - tion' are written below. The second staff continues the melody, starting on G4, marked with a red 'G' and an accent. It includes a half note on B4 and ends with a double bar line. The lyrics 'of_ our God.' are written below. Hymn F2 consists of two staves. The first staff begins with a treble clef and a key signature of one sharp (F#). The melody starts on G4, marked with a red 'G' and an accent. It includes a half note on B4. The lyrics 'Save_ us, O Son_ of God, Who wast in - car - - - nate for us,' are written below. The second staff continues the melody, starting on G4, marked with a red 'G' and an accent. It includes a half note on B4 and ends with a double bar line. The lyrics 'as we chant_ to Thee:_ Al - le - lu - i - a.' are written below.

Entrance Hymns for Feast Days

Palm Sunday

G1 *Un.* **G**

Bless - ed is He that com - eth in the Name of the Lord.

F **E**

God is the Lord, and hath ap - peared un - to us.

G2 **G** **E** *Un.*

Save us, O Son of God, Who didst sit up - on the foal,

G

as we chant to Thee: Al - le - lu - i - a.

Holy Pascha

H1 *Un.* **G** **F** **G** **E**

In con - gre - ga - tions bless ye God, the Lord from the springs

of Is - ra - el.

Entrance Hymns for Feast Days

H2

Save us, O Son of God, Who art risen from the dead,

as we chant to Thee: Alleluia.

Ascension

J1 Un. G E

God is gone up in ju - bi - la - tion, the Lord with the voice

of the trump - - - et.

J2

Save us, O Son of God, Who didst ascend in glory from us

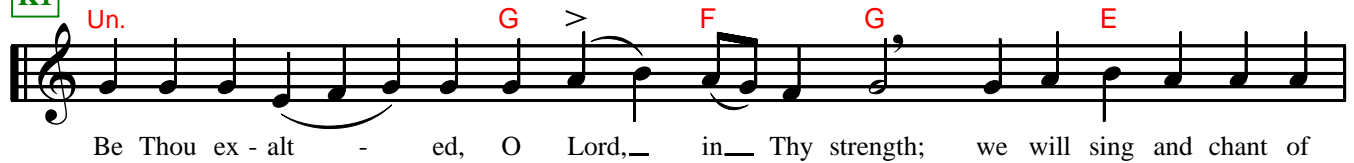
Un. G

in - to the Heav - ens, as we chant to Thee: Al - le - lu - i - a.

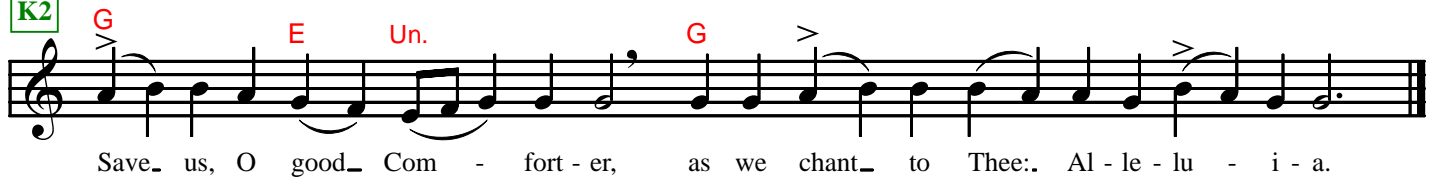
Entrance Hymns for Feast Days

Pentecost

K1

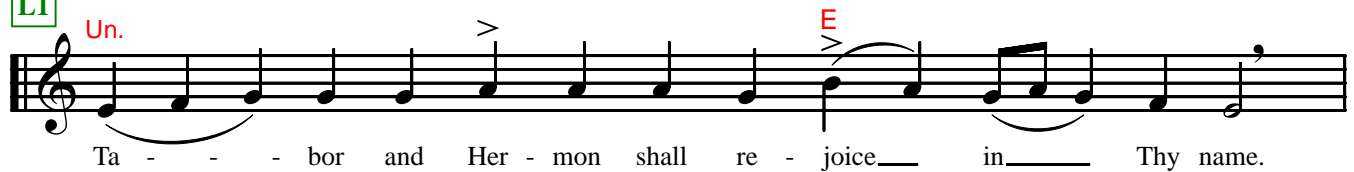


K2



August 6 The Transfiguration

L1



L2

